

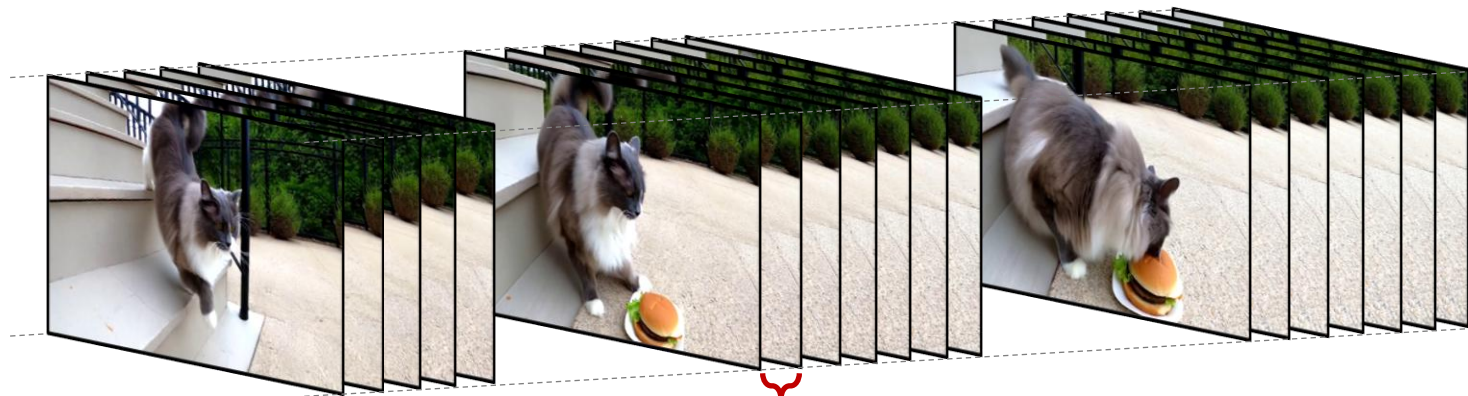
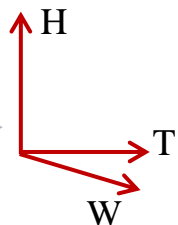
Dimension-Reduction Attack! Video Generative Models are Experts on Controllable Image Synthesis

Hengyuan Cao¹ Yutong Feng^{2†} Biao Gong³ Yijing Tian⁴ Yunhong Lu¹ Chuang Liu⁴ Bin Wang²

¹Zhejiang University ²Kunbyte AI ³Ant Group, ⁴Hangzhou Normal University

[†] Indicates Project Leader

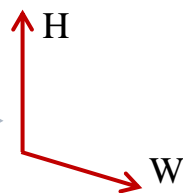
Video Generation



continuous transition

Two-frame
video generation

Controllable
Image Generation



discrete transition

However, ...



Gone with the Wind



Mixup-based shot transition

Condition image



Target image prompt

*a cat in
a chef outfit*

Condition image prompt

a cat

DRA-Ctrl generates ...

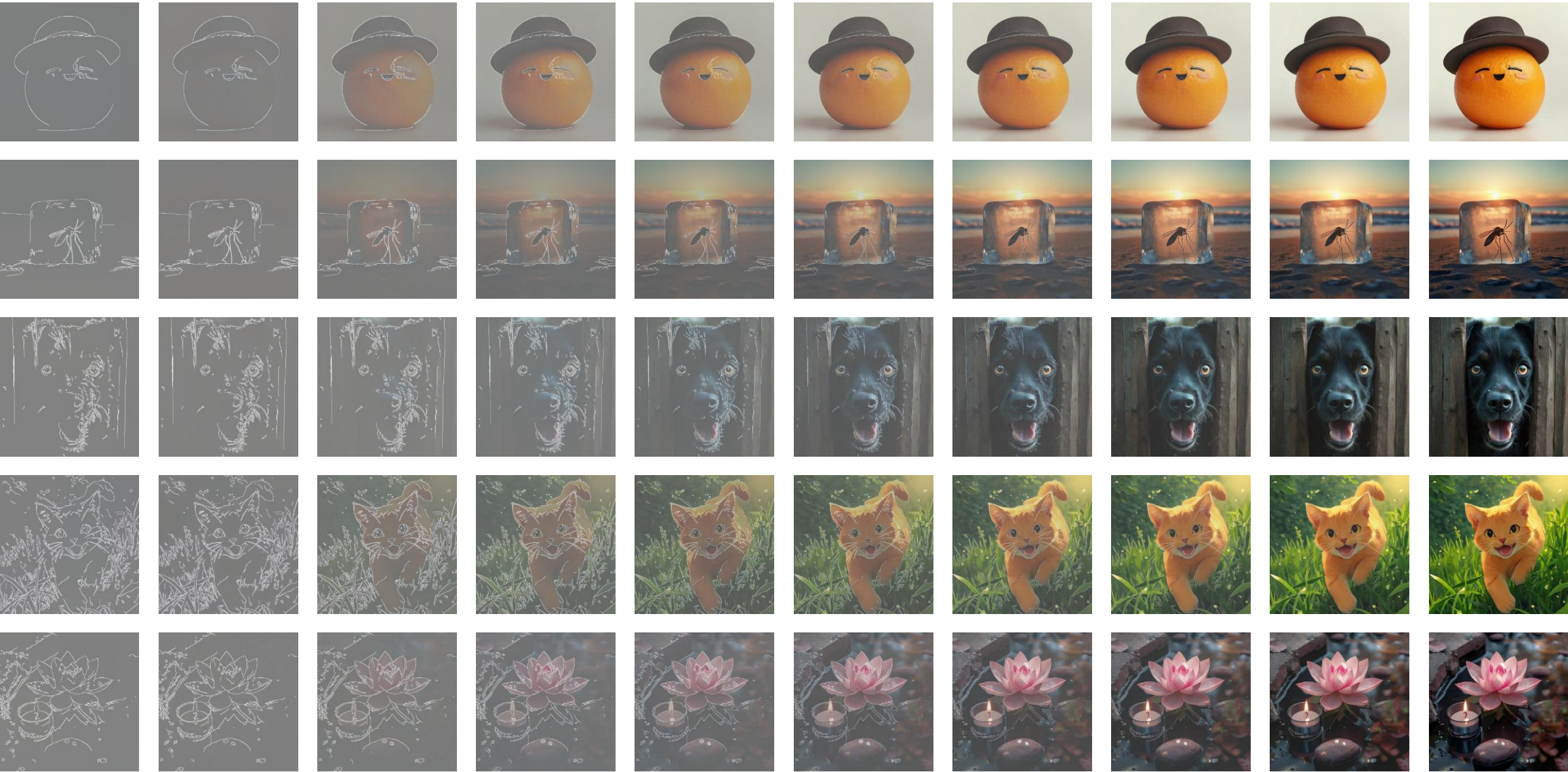


Final generated target image

Canny-to-image

Condition image

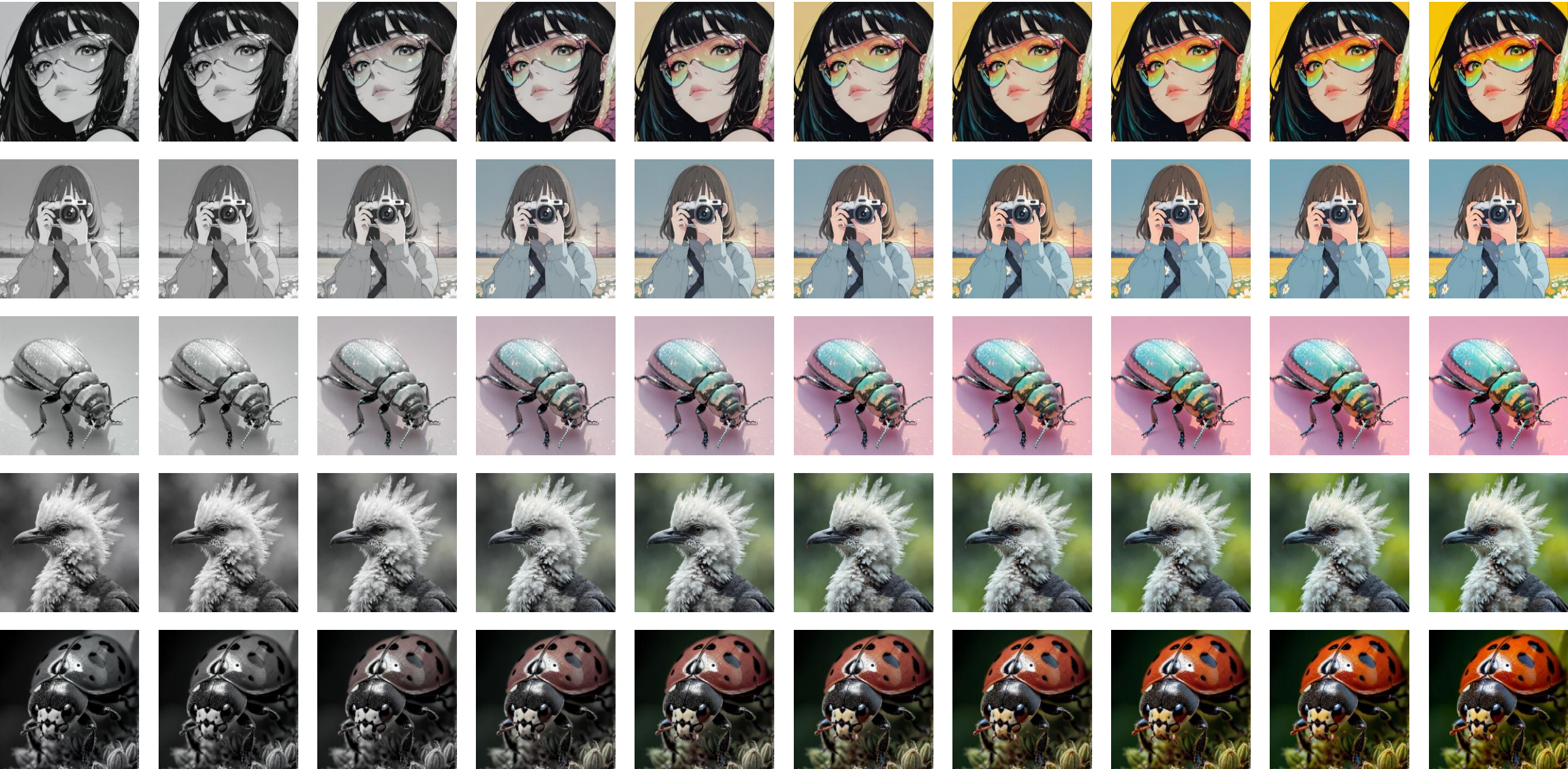
Target image



Colorization

Condition image

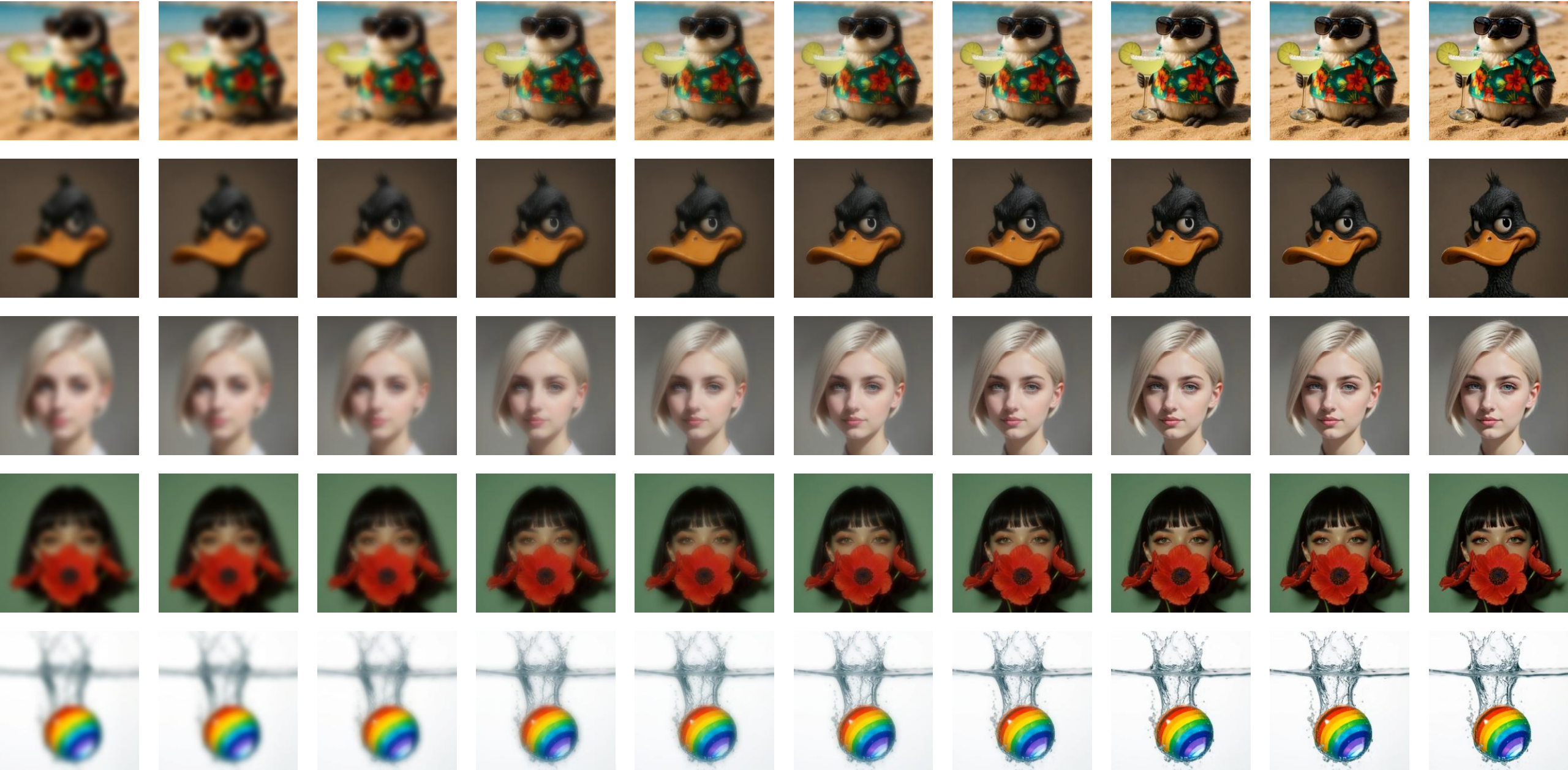
Target image



Deblurring

Condition image

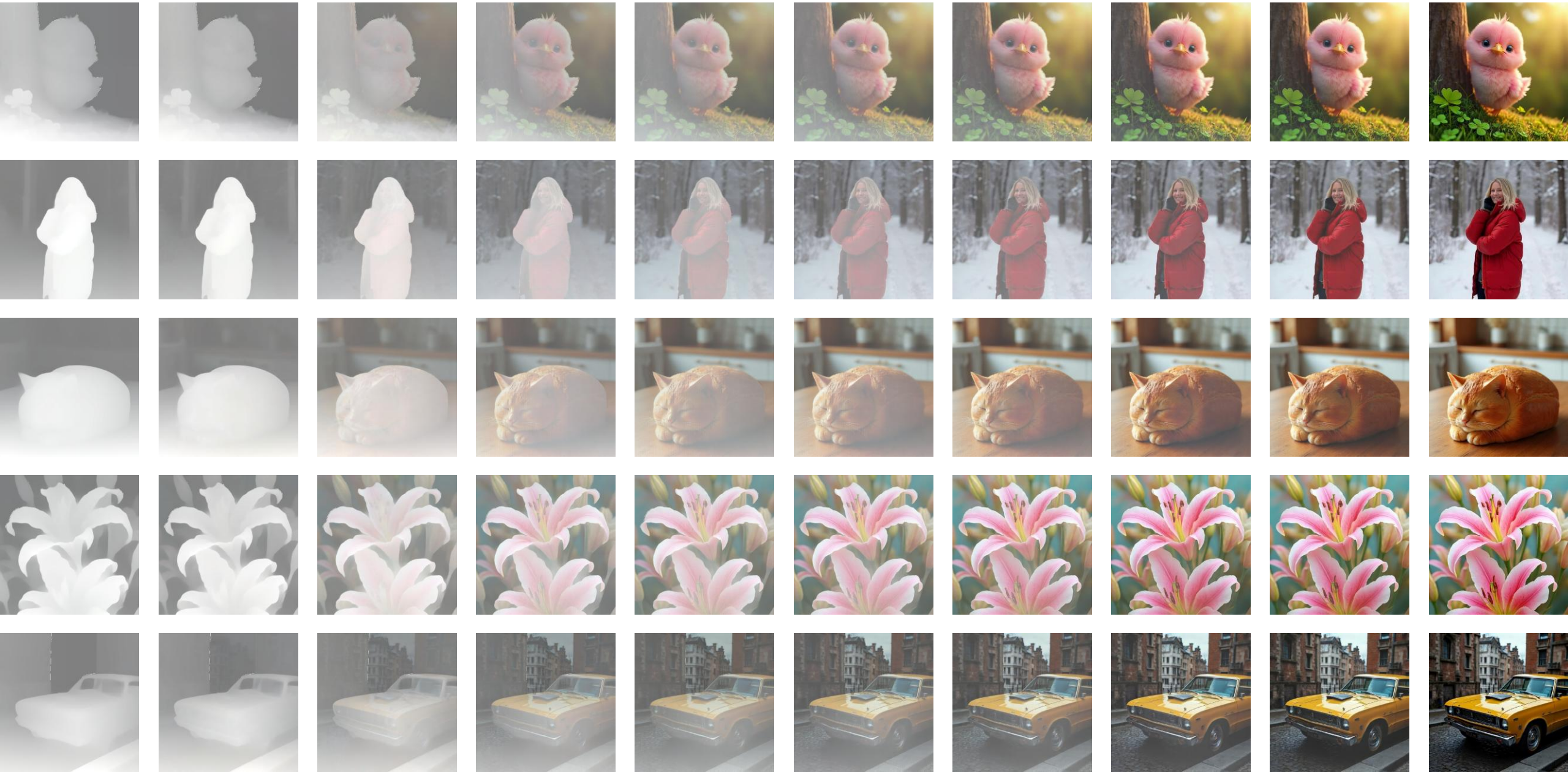
Target image



Depth-to-image

Condition image

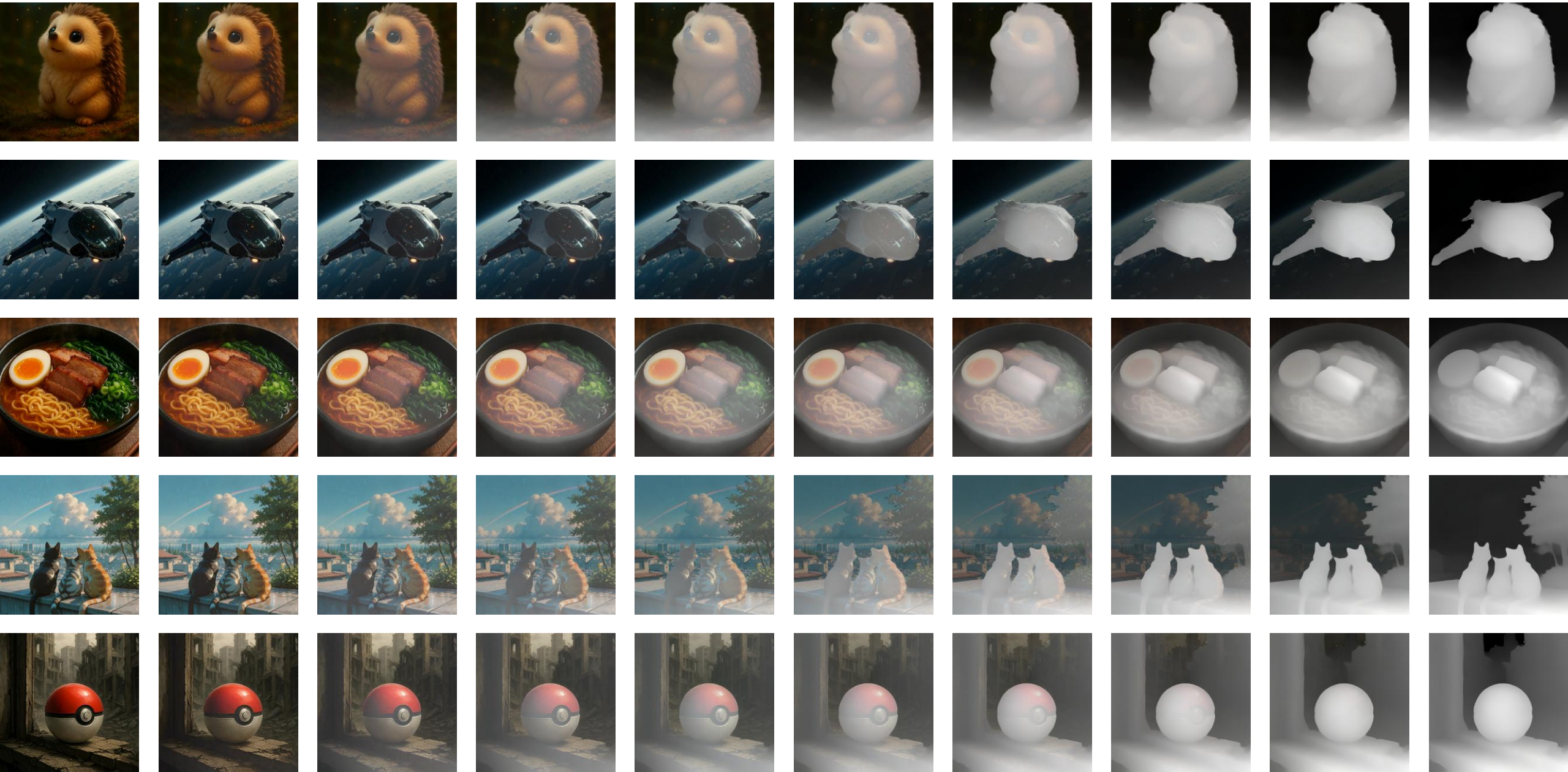
Target image



Depth prediction

Condition image

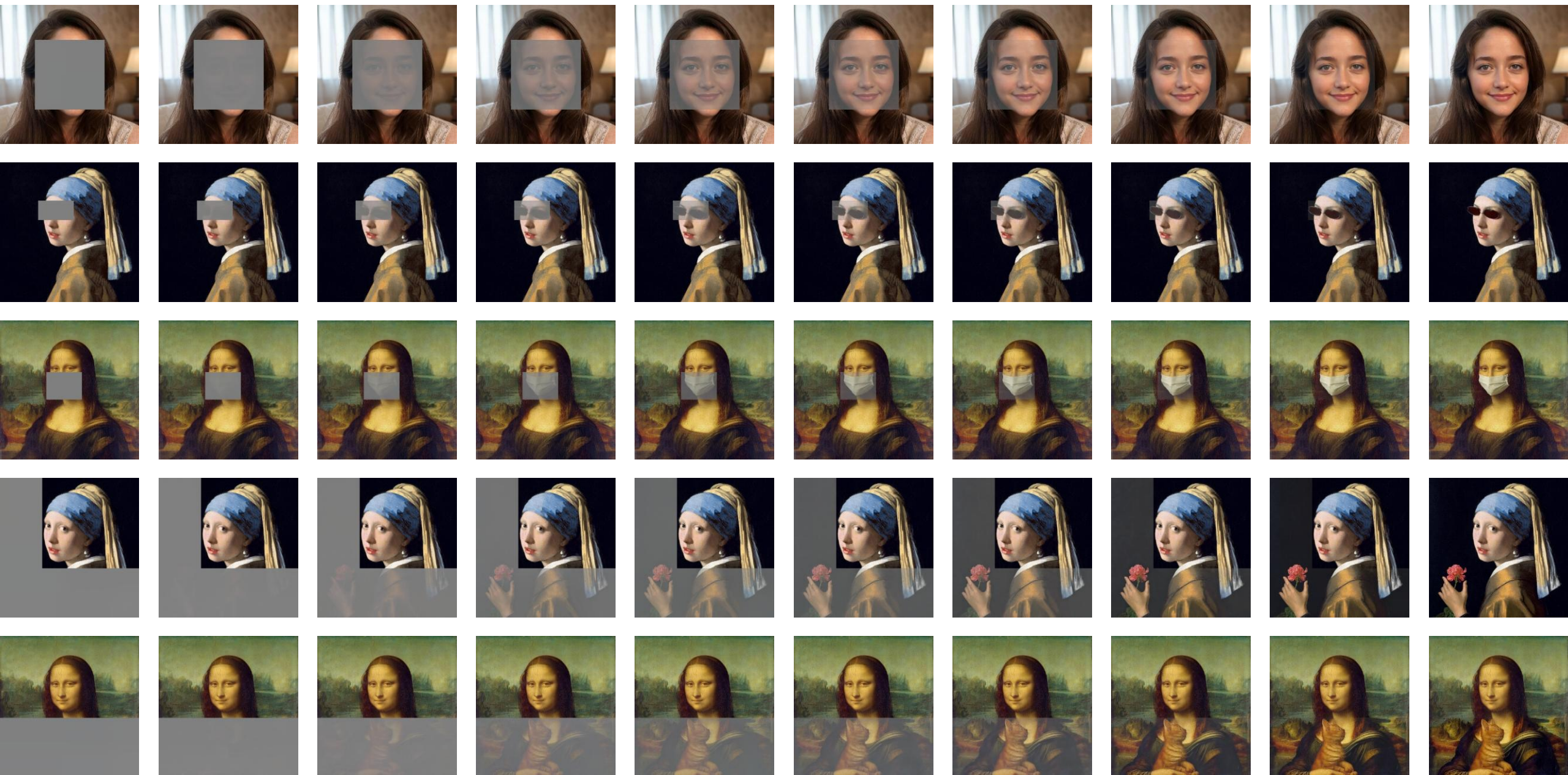
Target image



In/out-painting

Condition image

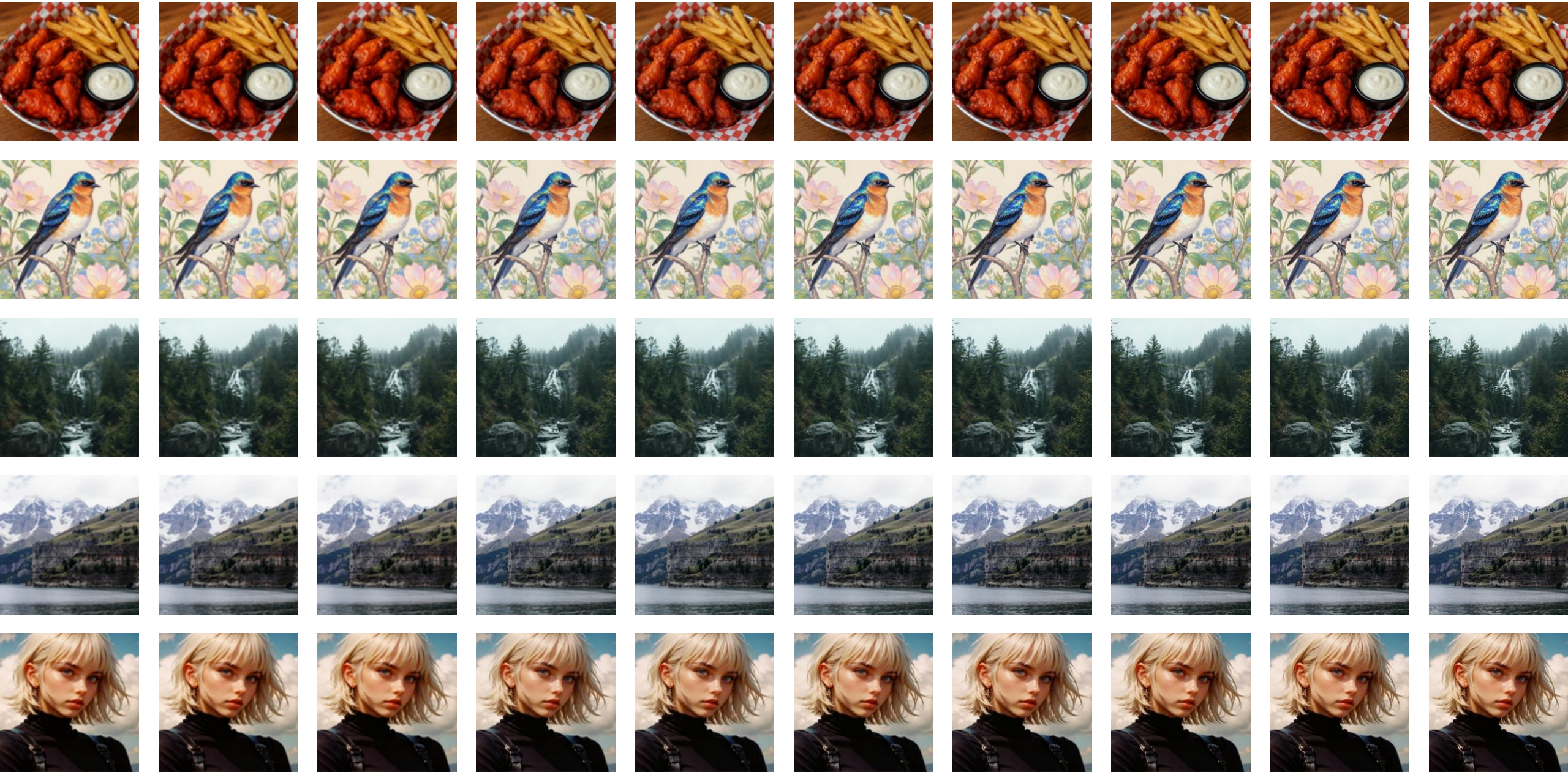
Target image



Super-resolution

Condition image

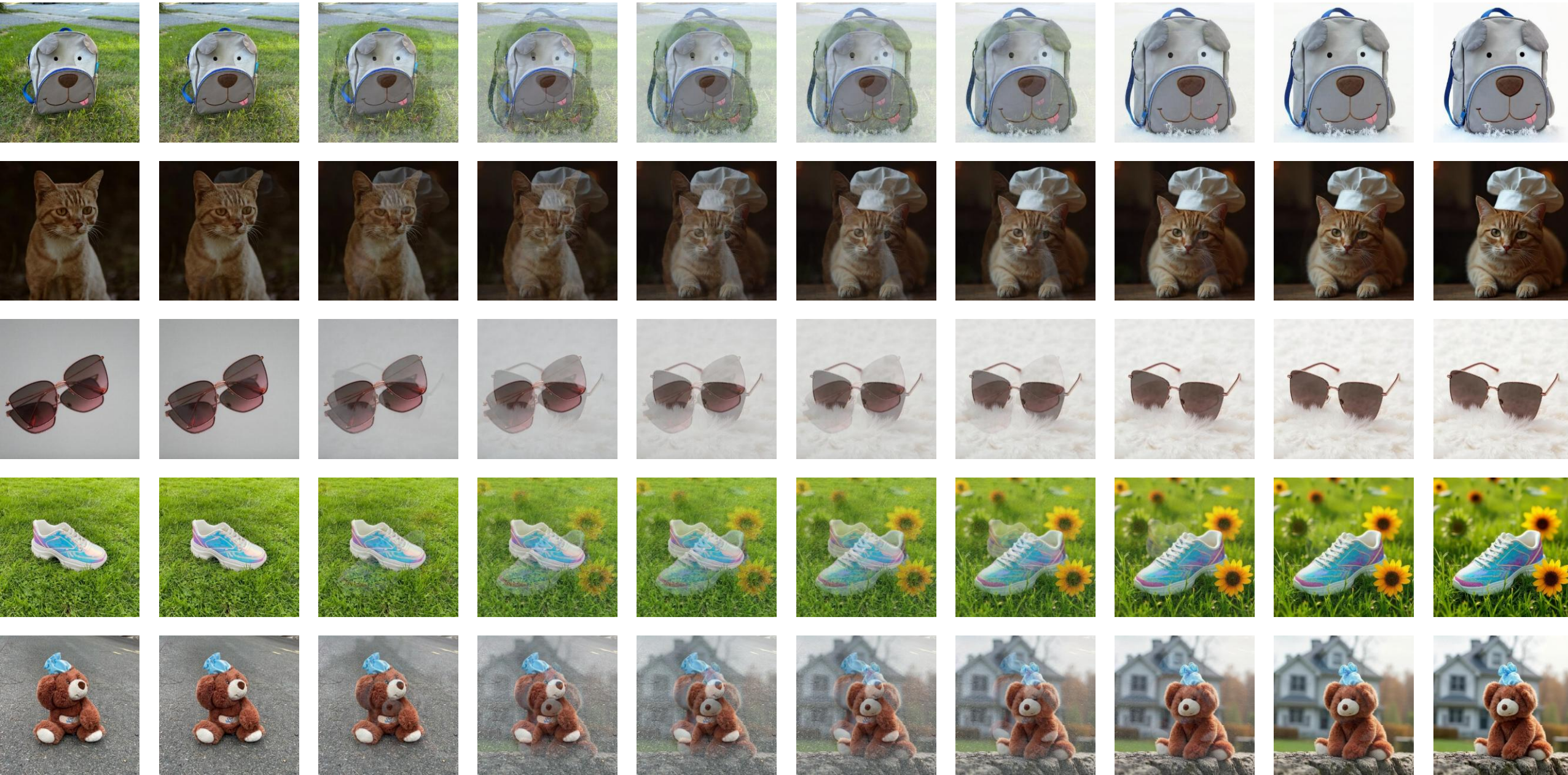
Target image



Subject-driven image generation on DreamBench

Condition image

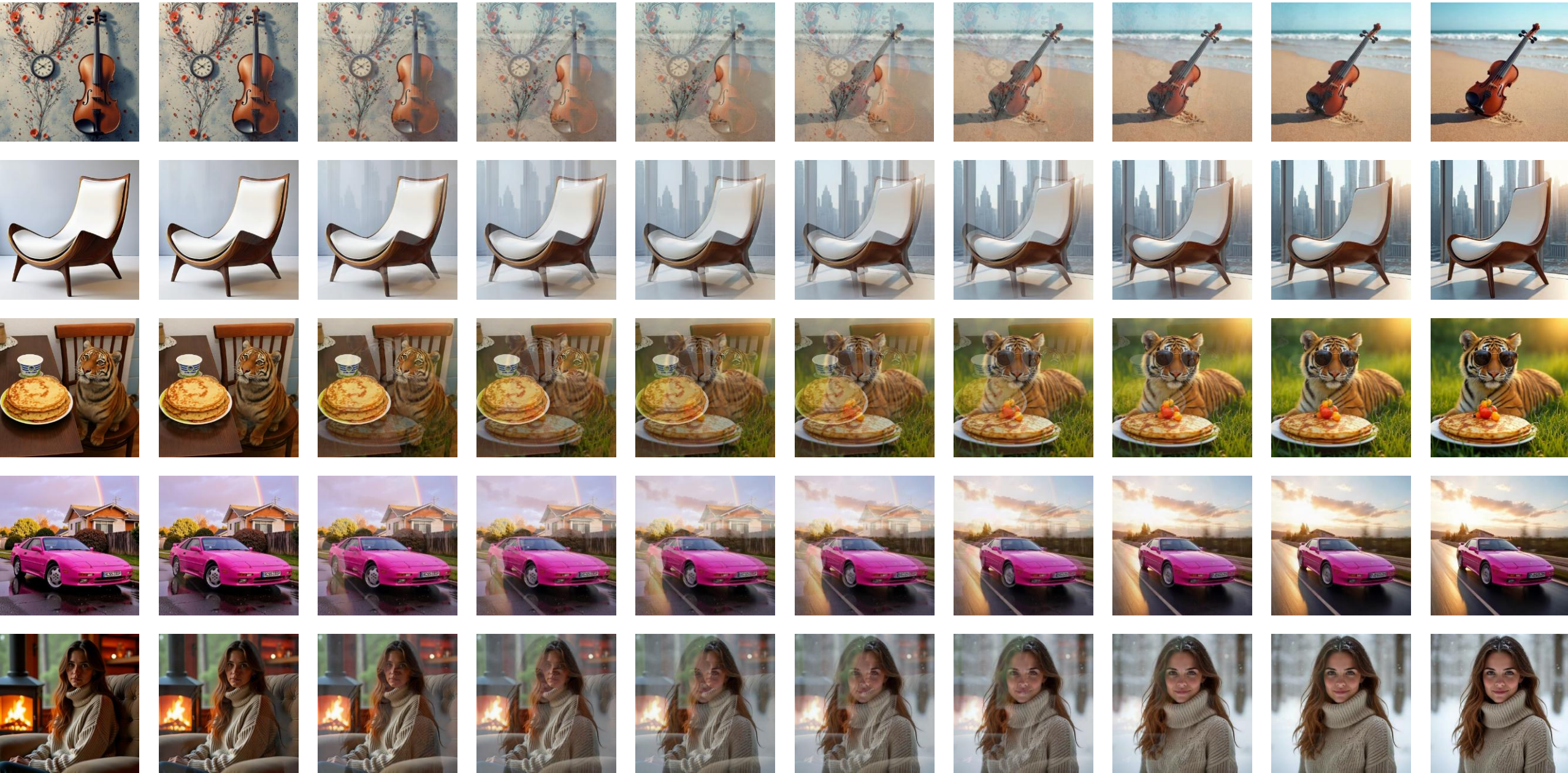
Target image



Subject-driven image generation

Condition image

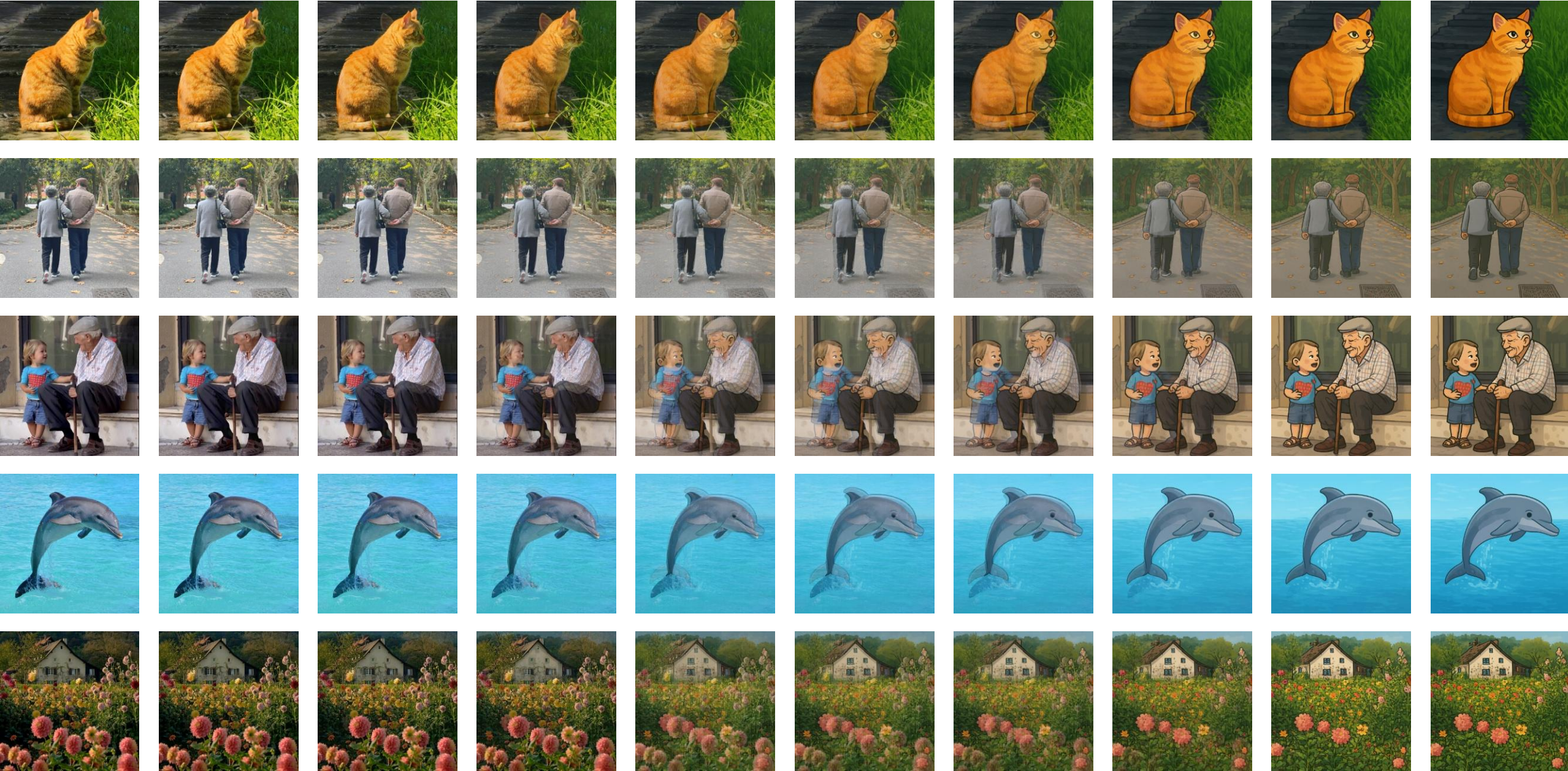
Target image



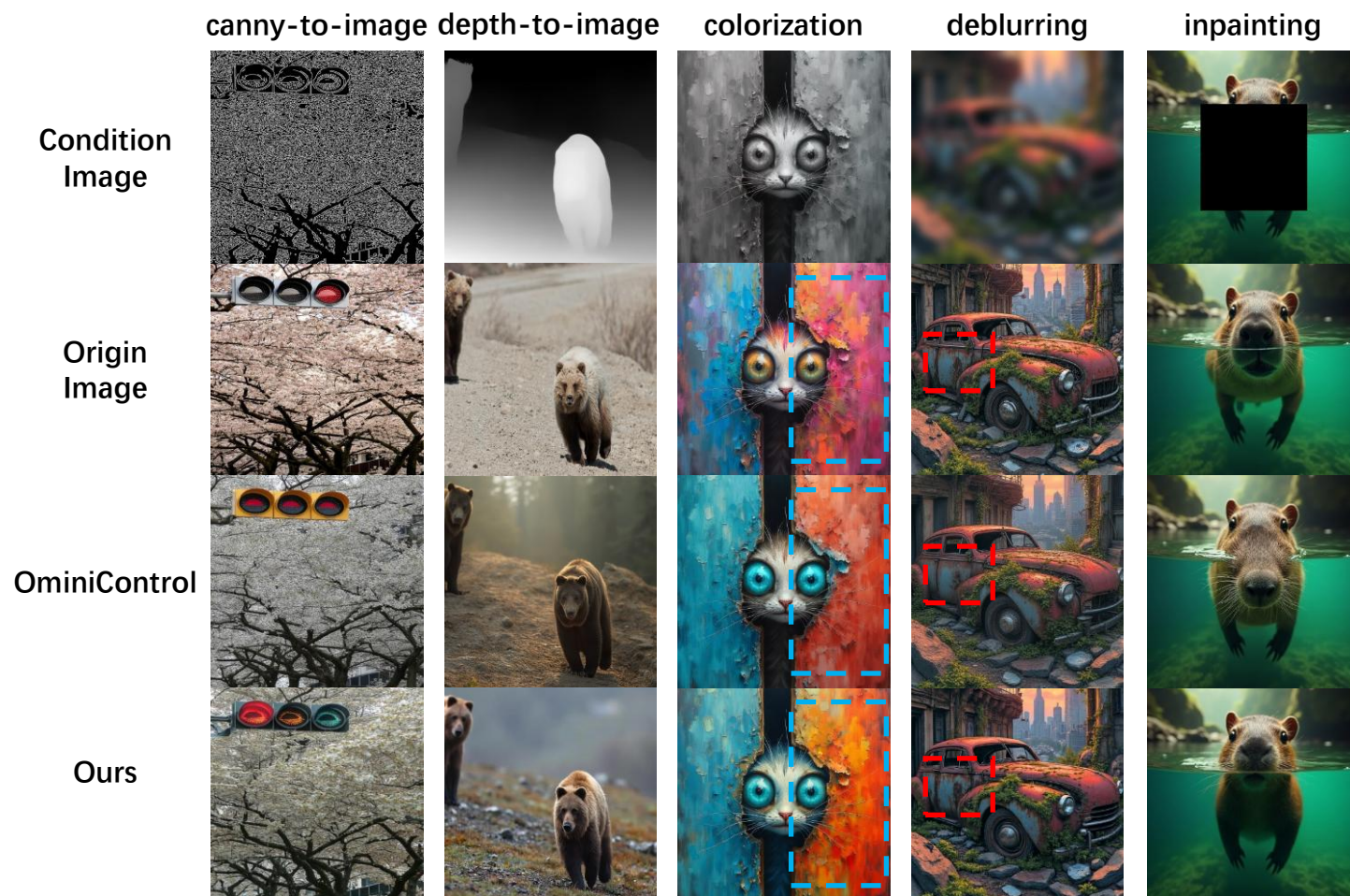
Style transfer

Condition image

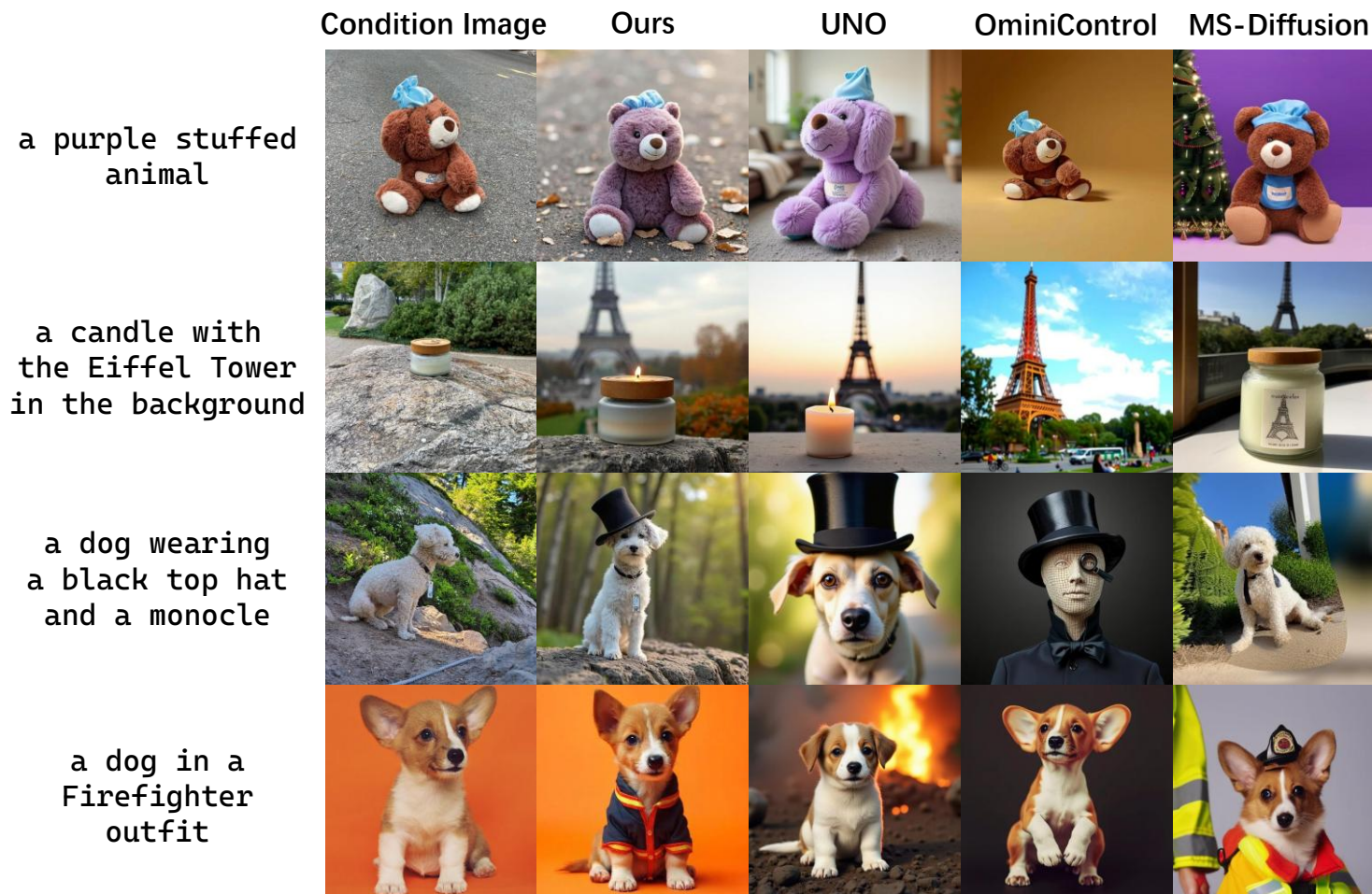
Target image



Comparison with other methods



Comparison with other methods



For more information, please visit our project page!

