



# Spatiotemporal Consensus with Scene Prior for Unsupervised Domain Adaptive Person Search

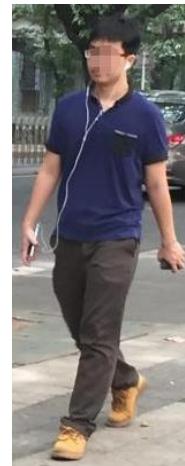
Yimin Jiang, Huibing Wang, Jinjia Peng



Jack



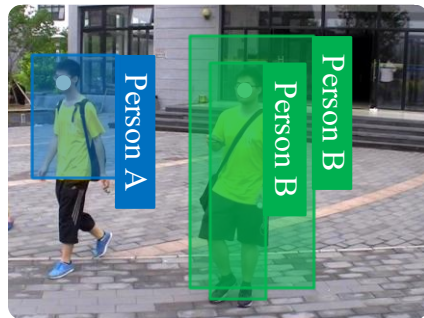
Tom



Person search aims to localize and identify the query person from a gallery of the whole scene images, which can be taken as a joint task of person detection and re-identification (reid) in computer vision. Unsupervised domain adaptation in person search aims to achieve model generalization from labeled source data to unlabeled target deployment scenarios.



**a** A correct pseudo-label has an accurate BBox and a correct person identity.



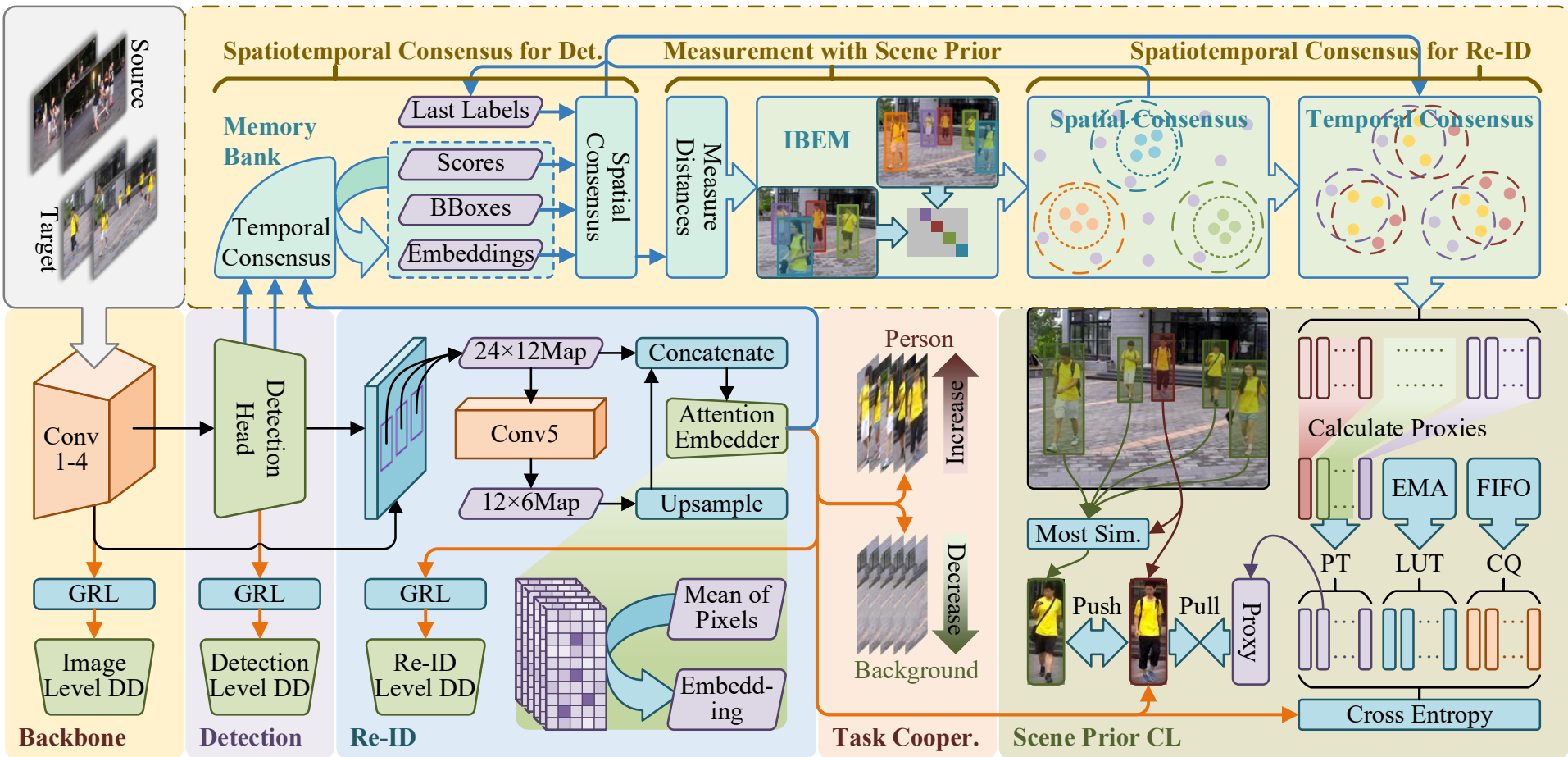
**b** An inaccurate pseudo-BBox manifests in the form of either encapsulating an erroneous region or exhibiting the overlap of multiple boxes.

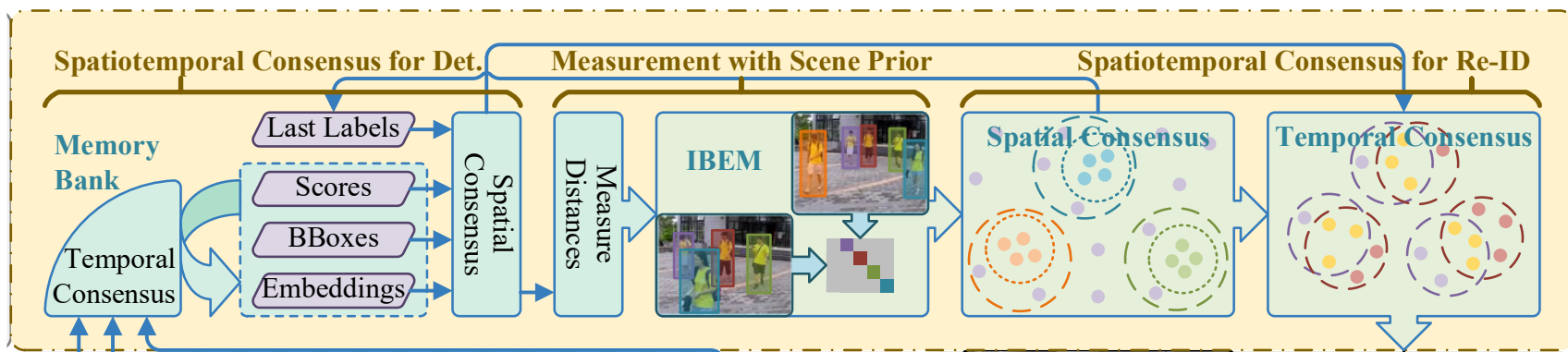


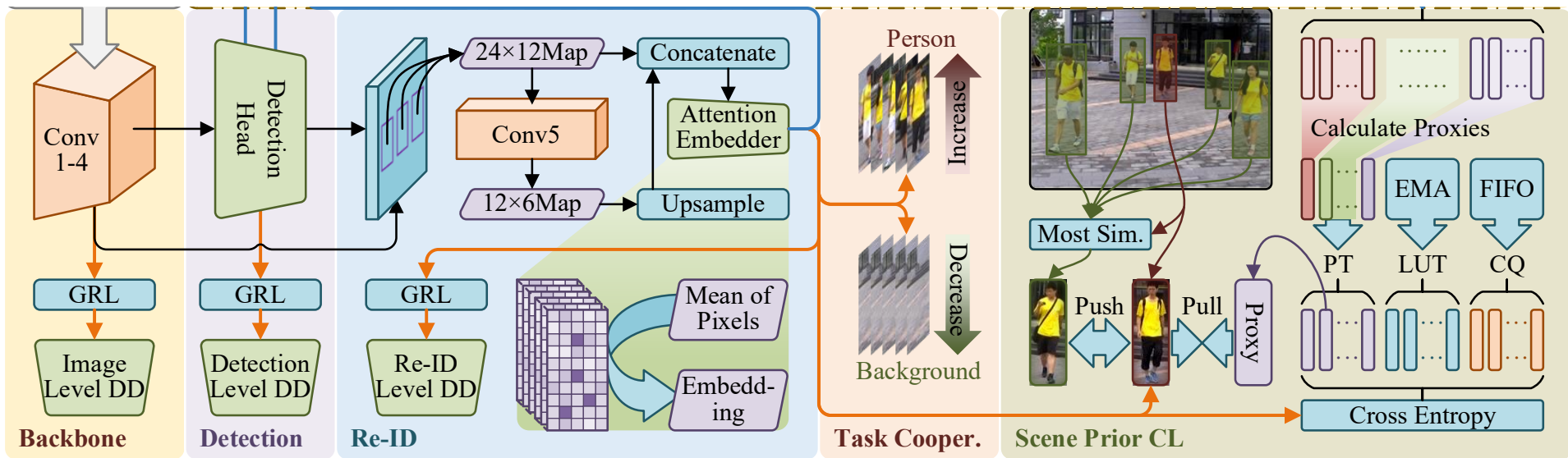
**c** An incorrect identity label comes from situations where an identity is assigned to different individuals or where different instances of a person are assigned different identities.



**d** Assigning the same identity label to intra-scene persons is a clear error.









**END**

**THANK YOU**