

# SENTINELKILNDB

**A Large-Scale Dataset and Benchmark for OBB Brick Kiln  
Detection in South Asia**

## AUTHORS



**Rishabh  
Mondal**



**Jeet  
Parab**



**Heer  
Kubadia**



**Shataxi  
Dubey**



**Shardul  
Junagade**



**Zeel B Patel**



**Nipun  
Batra**



# Air Pollution: A global crisis











# Brick Kiln Technologies



Circular Fixed Chimney  
Bull's Trench Kiln



Fixed Chimney Bull's  
Trench Kiln



Zig-Zag Kiln

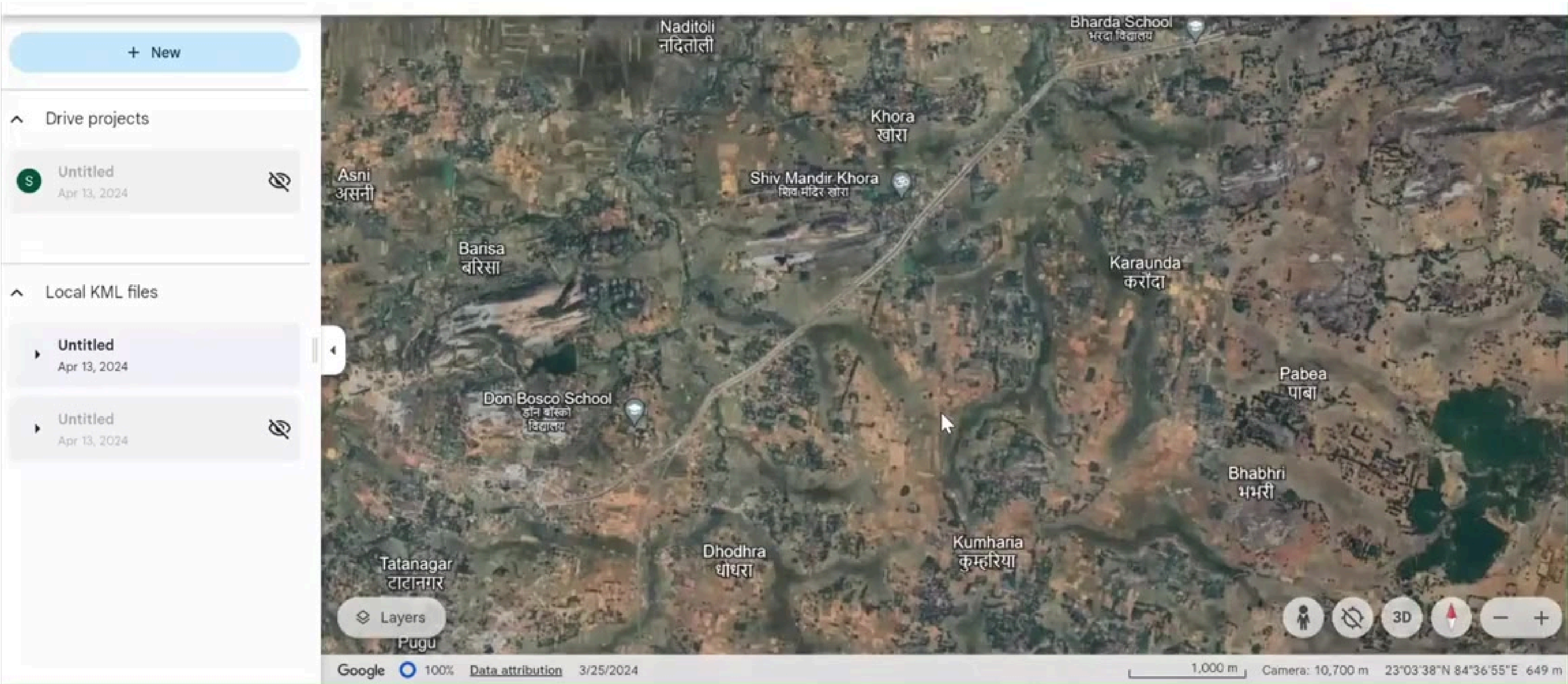


A photograph of an industrial facility with numerous tall smokestacks emitting thick plumes of dark smoke into a hazy sky. The foreground shows some industrial structures and ground. A semi-transparent dark blue box is overlaid at the bottom of the image.

**Unorganized sector, hard to regulate**



# Manual Annotation: Accurate but Labour Intensive





# SentinelKilnDB Dataset



# Dataset Sources



**sentinel-2**



**esri**<sup>TM</sup>

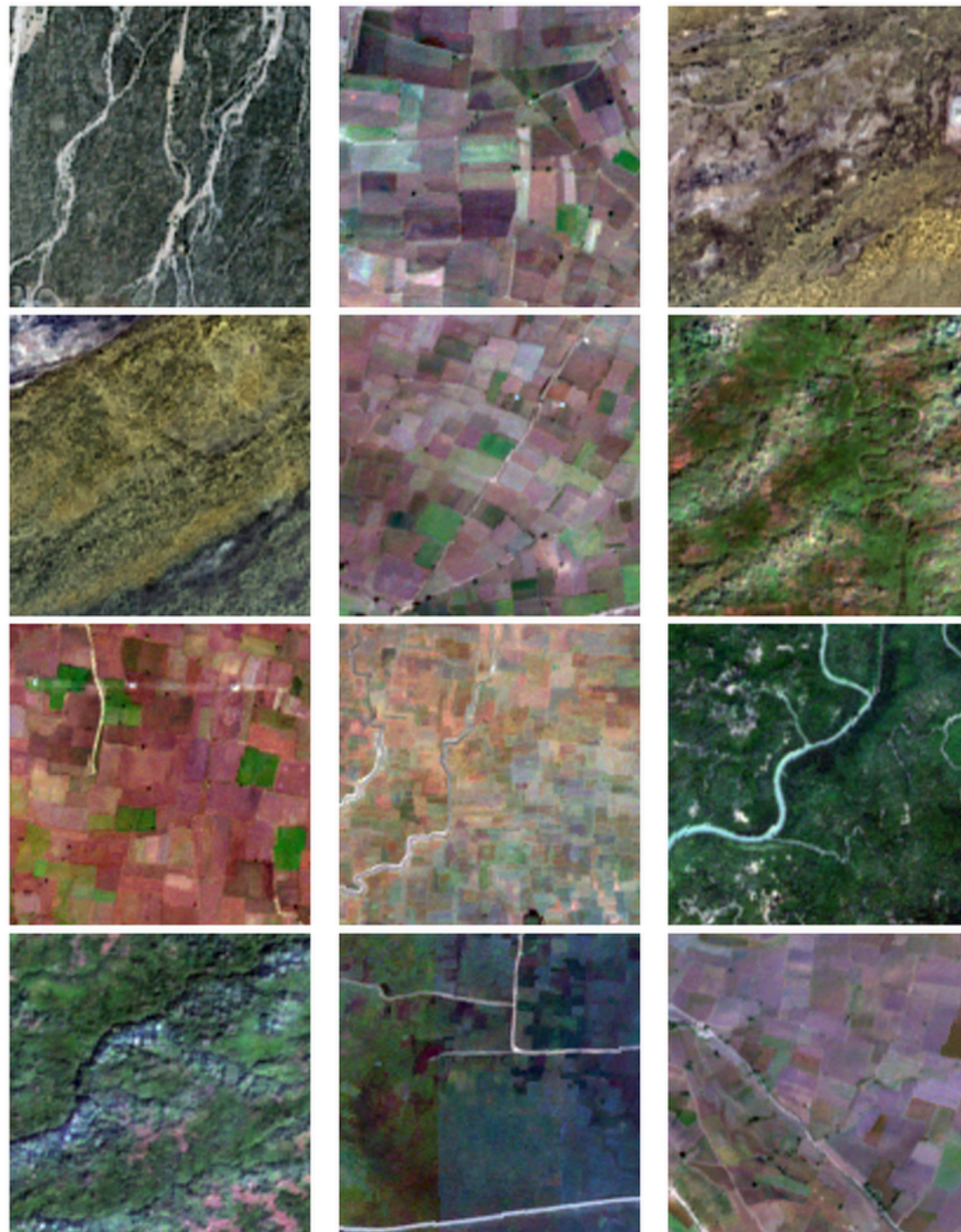


WorldCover





# Curating Negative Samples



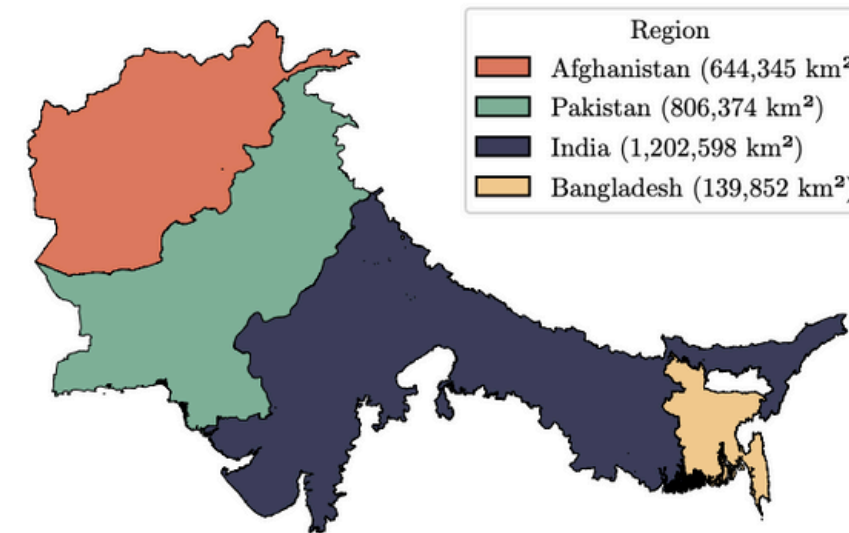
Helps the model learn when not to predict a kiln, reducing false positives and improving overall reliability.

1. **Clean Non-Kiln Data:** We curated over 41,000 Sentinel-2 tiles from ESA WorldCover v200, representing regions without brick kilns.
2. **High Confidence Selection:** Used areas with  $\geq 99.9\%$  class confidence across major land-cover types.
3. **Manual Verification:** Every candidate tile was cross-checked with Esri basemaps and any tile with visible kiln was removed.

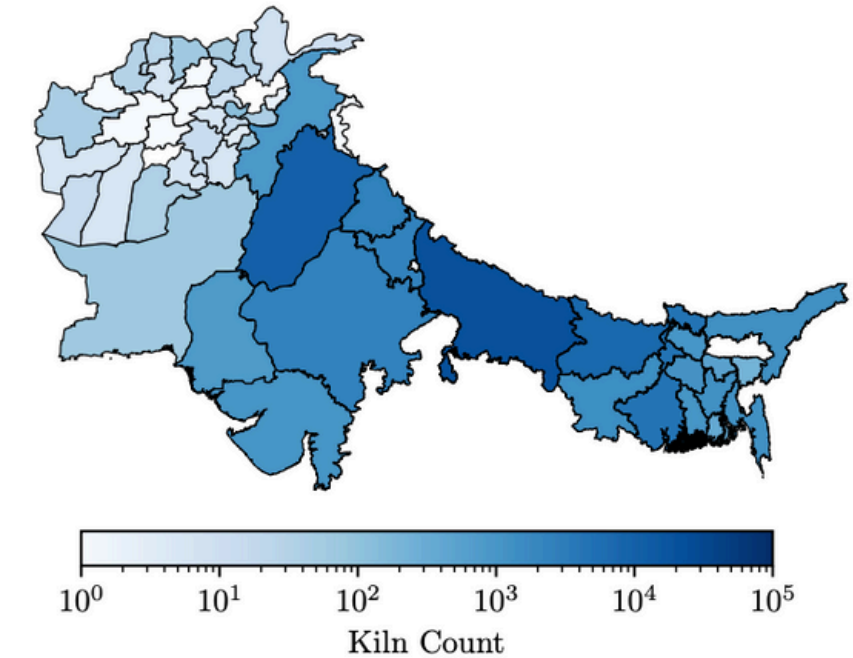


# Dataset Overview

- 62,671 kilns across India, Bangladesh, Pakistan, Afghanistan
- Coverage: ~2.8 million km<sup>2</sup>
- OBB annotations on Sentinel-2 (10 m/pixel) imagery



(a) Coverage of our dataset over various countries



(b) Brick kiln count per state



(c) CFCBK



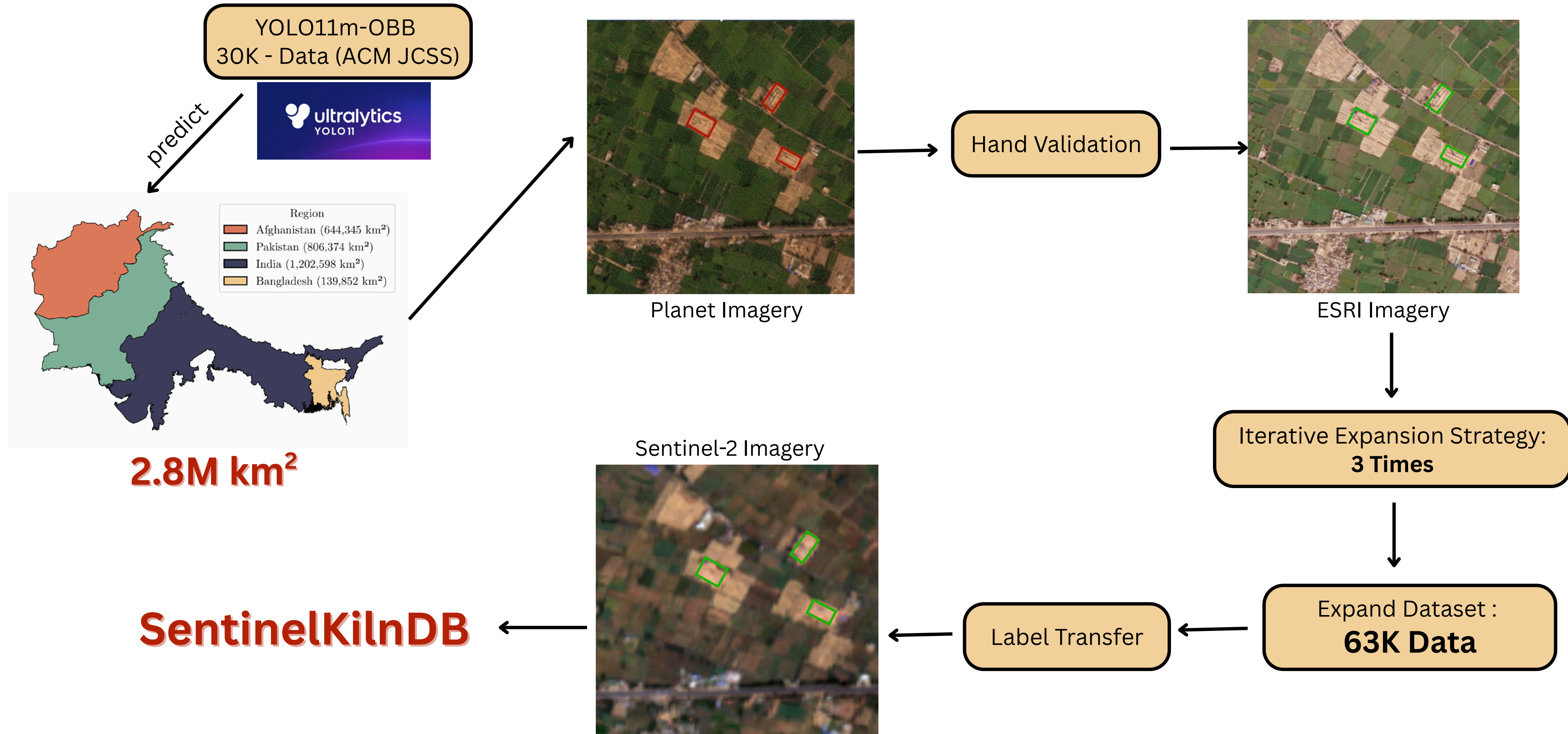
(d) FCBK



(e) Zigzag

Figure 2: Spatial distribution of brick kilns and their counts across various regions. (a) Geographic extent of our dataset, covering Afghanistan, Pakistan, India, and Bangladesh. (b) Kiln count per state on a log scale. (c–e) Spatial distribution of kilns by type: CFCBK, FCBK, and Zigzag. CFCBKs are predominantly found in Uttar Pradesh, Bihar and West Bengal regions, FCBKs are present in all regions, and Zigzags are present in all regions except Afghanistan.

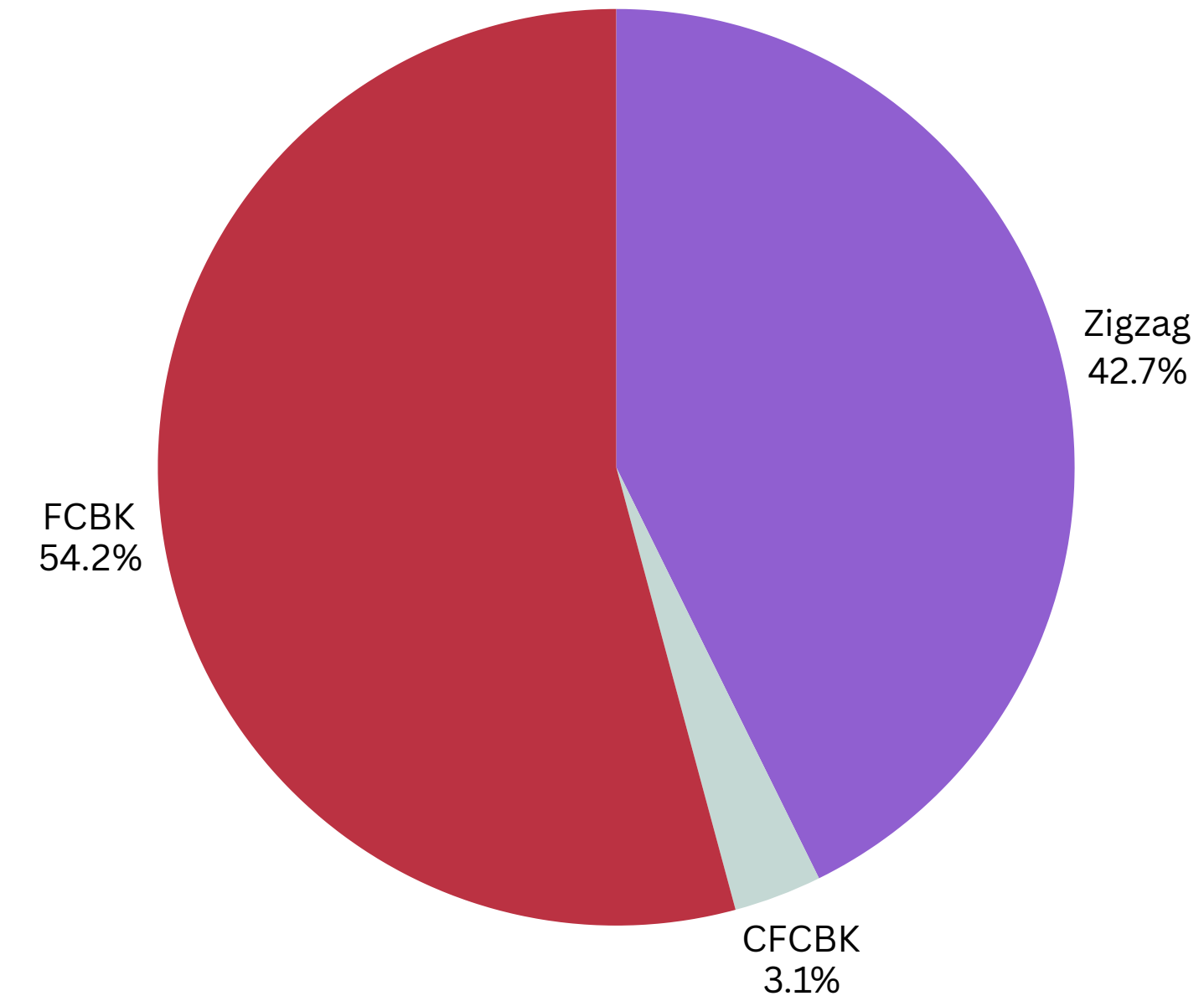
# Data Creation Pipeline





# Overall Brick Kiln Distribution

Country	State/Region	CFCBK	FCBK	Zigzag	Total	Negative Samples
India	9 states	1,939	21,451	19,592	42,982	30,650
Bangladesh	8 divisions	2	1,461	5,440	6,903	5,548
Pakistan	4 provinces	3	10,443	1,731	12,177	3,970
Afghanistan	34 provinces	0	608	1	609	900
Total	-	1944	33,963	26,764	<b>62,671</b>	41,068

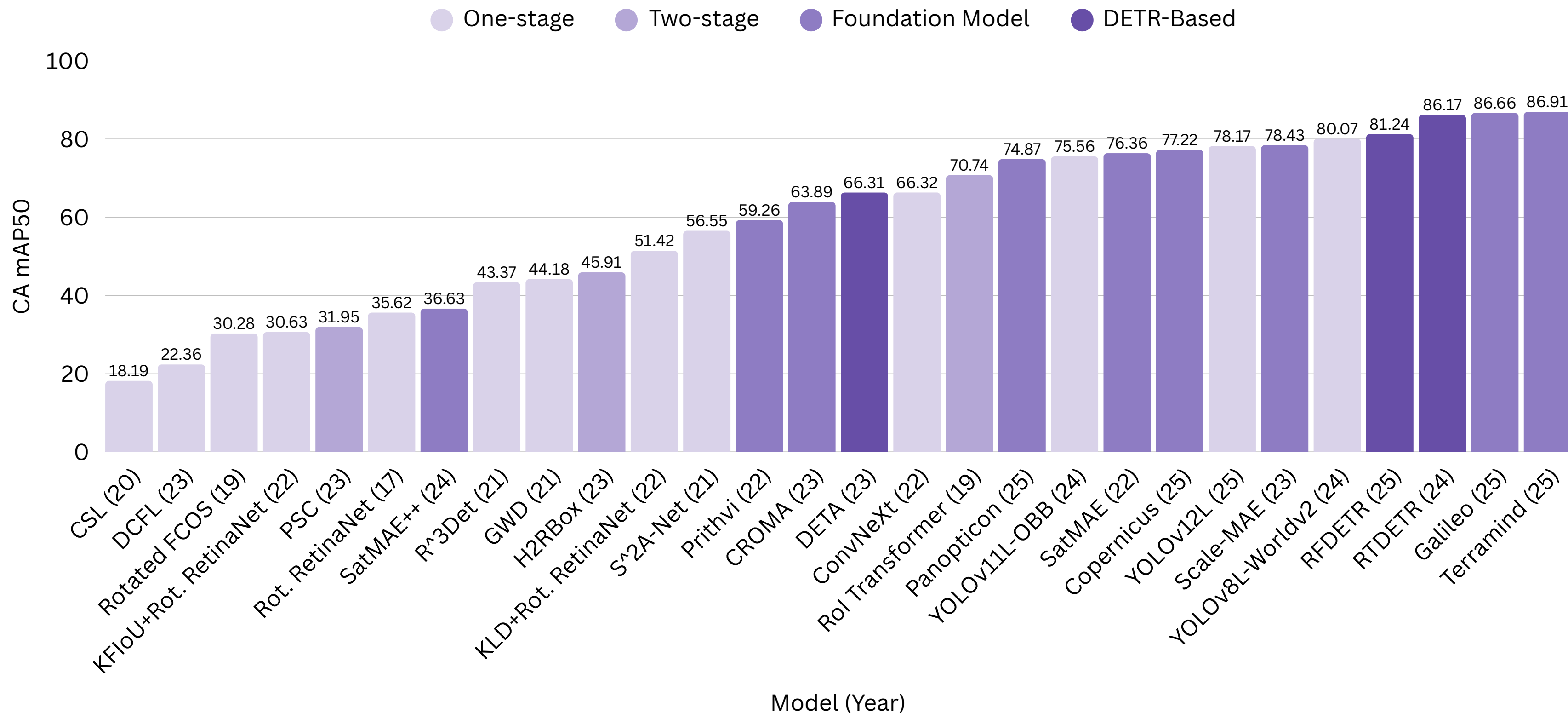


Split: Train 71,856 | Val 23,952 | Test 18,492

# SentinelKilnDB Benchmark



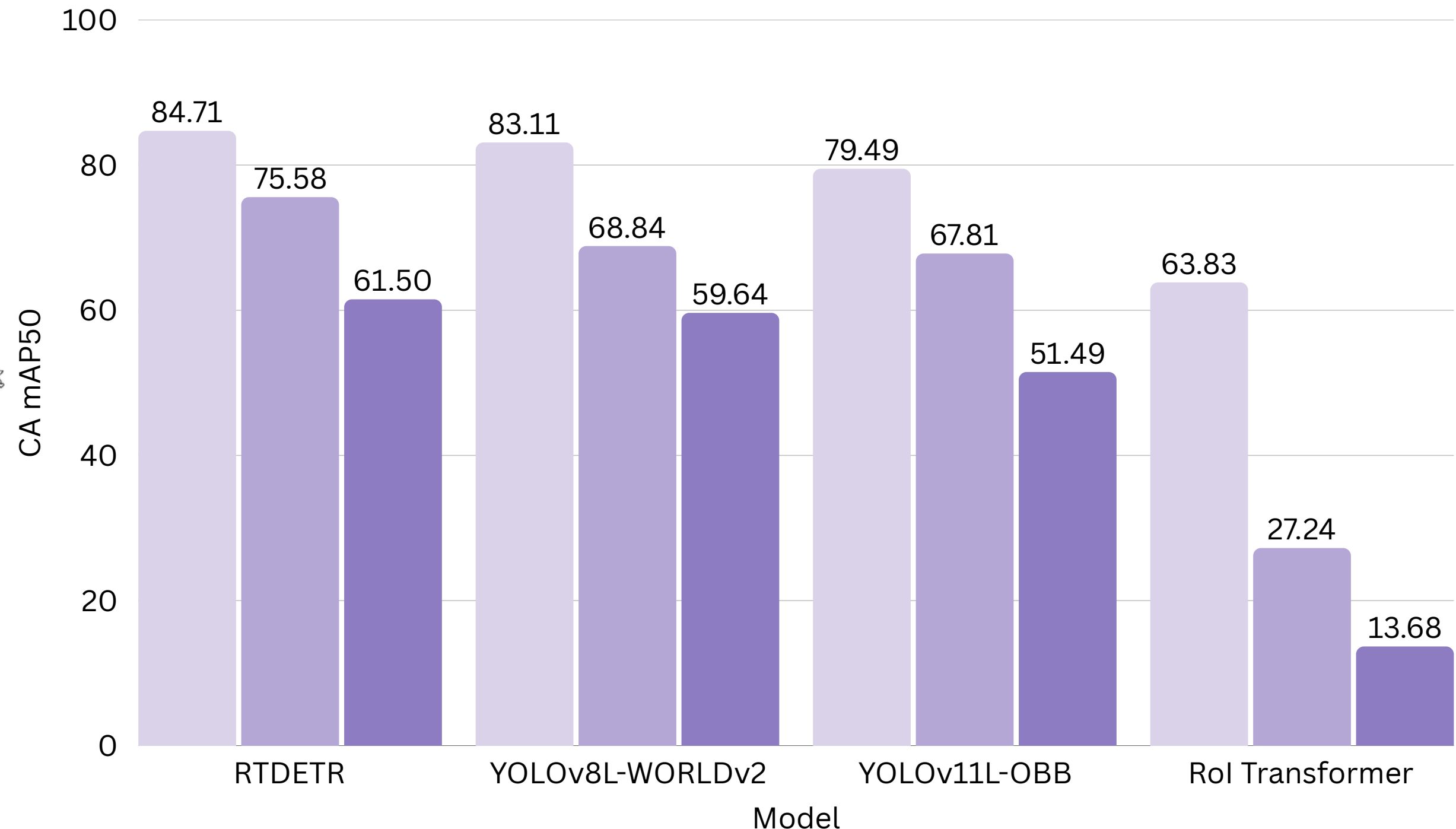
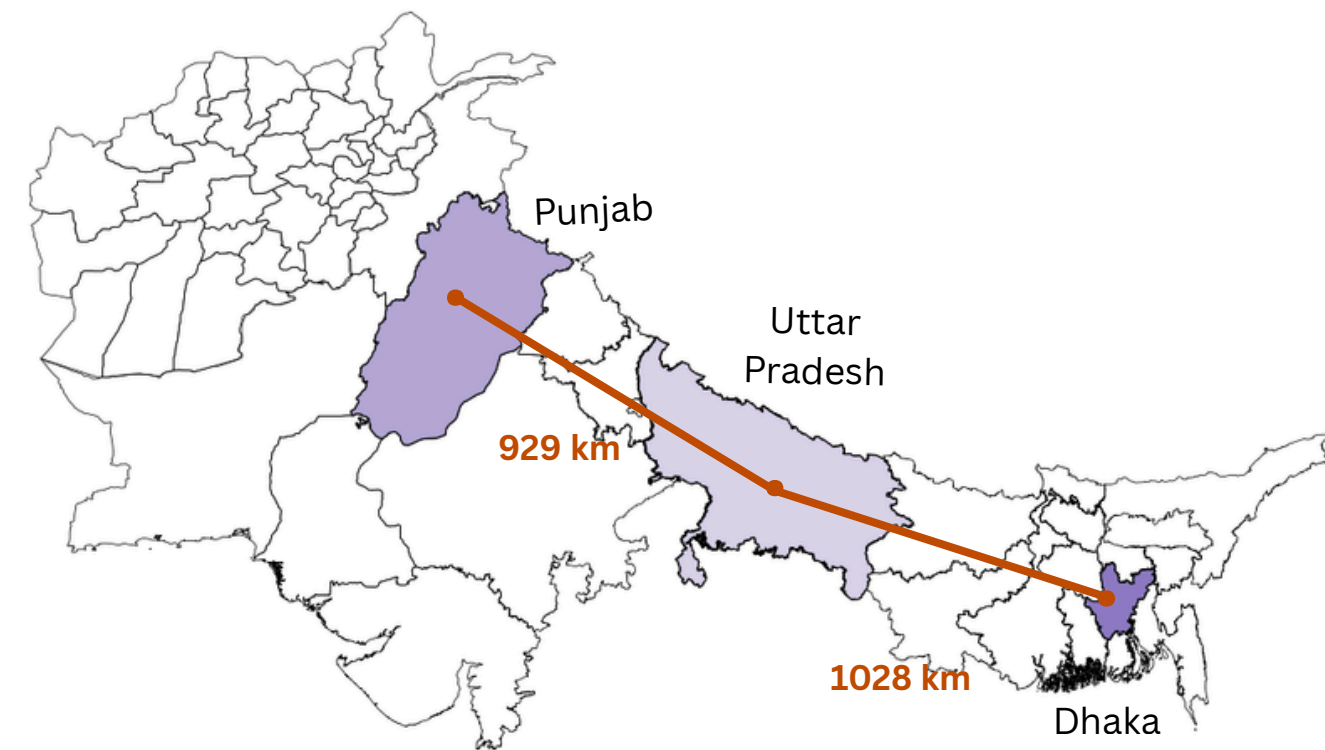
# T1 In-region Detection: Train and test within same region



Comparison of Class-Agnostic mAP50 across Models

# T2 Out-of-the-region Generalization: Evaluate transfer to unseen regions

● Uttar Pradesh (India, 243,286 km<sup>2</sup>)    ● Punjab (Pakistan, 205,344 km<sup>2</sup>)  
● Dhaka (Bangladesh, 20,508.8 km<sup>2</sup>)

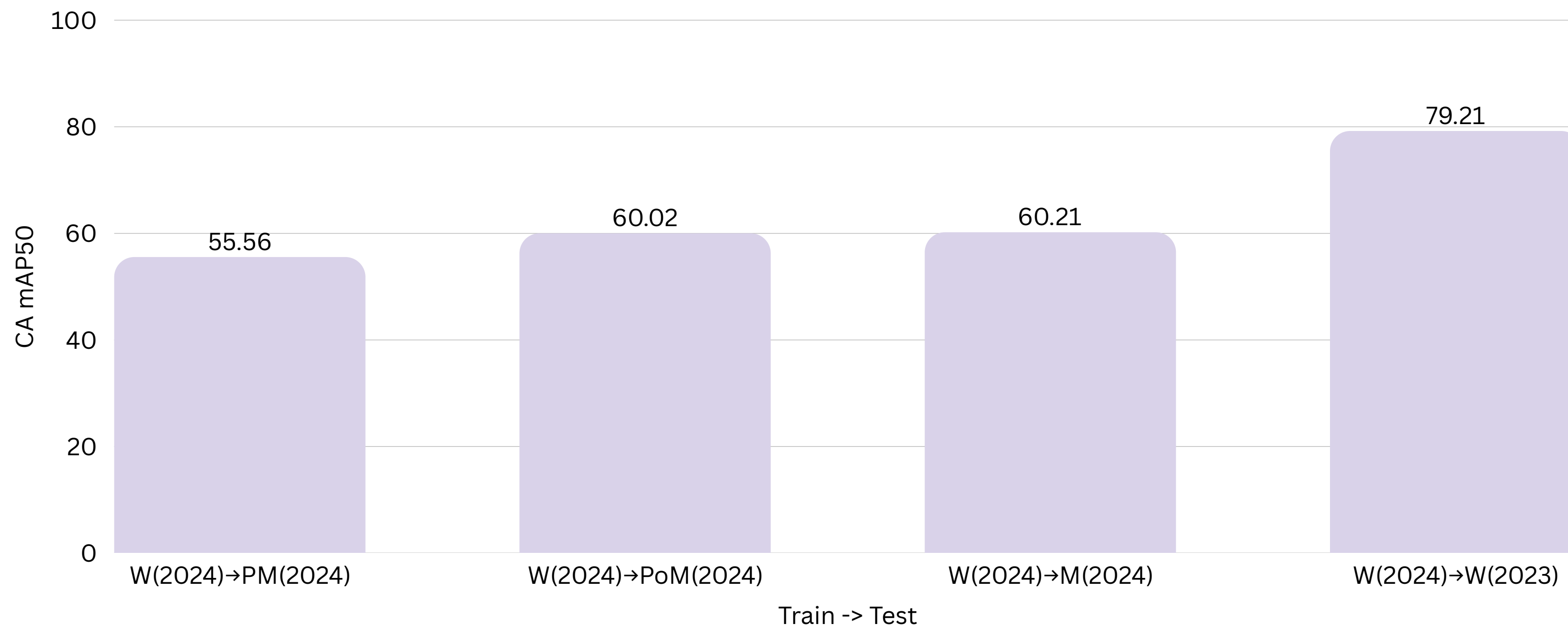


Comparison of Class-Agnostic mAP50 for Out-of-Region Performance



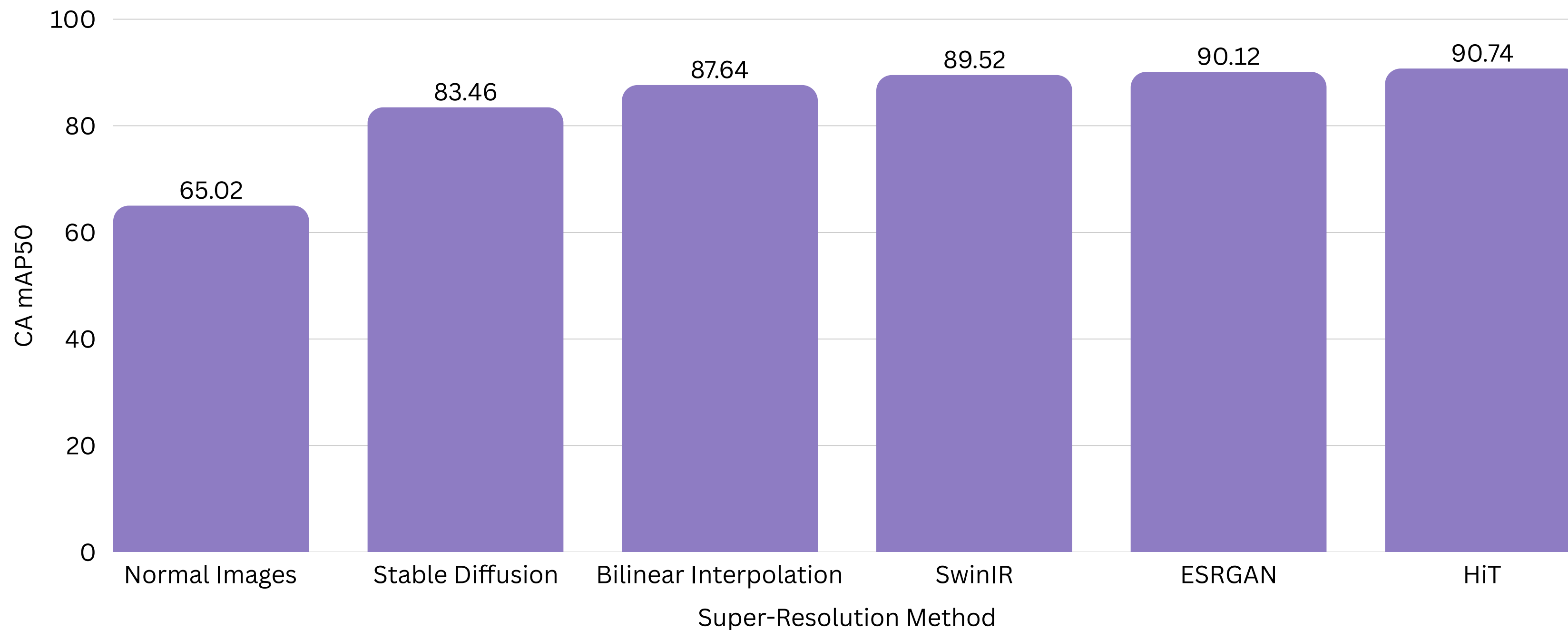
# T3 Temporal Generalization: Adapting to seasonal variation

Single-season splits: Train/test in the same season (baseline)  
(PM: Pre-Monsoon, M: Monsoon, PoM: Post-Monsoon, W: Winter)



Comparison across single-season train-test splits

# T4 Super-Resolution: Gains on YOLOv11L-OBB from upscaling the Sentinel-2 imagery



Comparison of Class-Agnostic mAP50 across Super-Resolution Methods



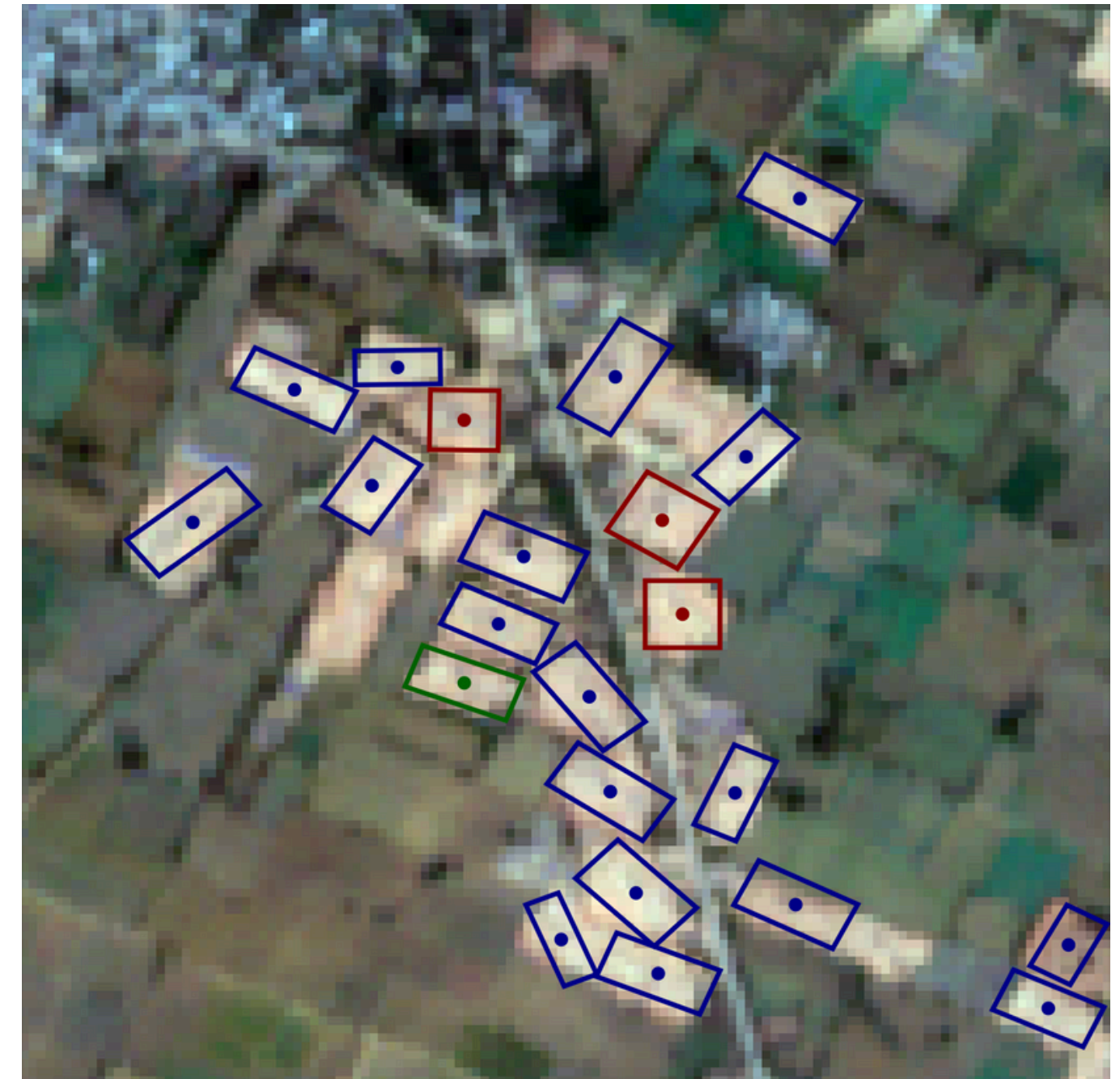
# Impact

**Largest public  
dataset for brick  
kiln detection in  
South Asia.**

Dataset	Imagery	Classes	Quantity	Instances	GSD
DOTA-V1.0	Google Earth	15	2,806	188,282	0.1    4.5m
FGSD	Google Earth	43	5,634	2,612	0.12    1.93m
DIOR-R	Google Earth	20	23,463	192,518	0.5    1m
<b>SentinelKilnDB</b>	<b>Sentinel-2</b>	<b>3</b>	<b>114,300</b>	<b>97,648</b>	<b>10m</b>

# Applications

- Provides a benchmark for OBB detection in low-resolution satellite imagery and geospatial generalization
- Enables accurate kiln-level emission estimates for air quality modeling
- Assists policymakers in monitoring technology transitions and compliance
- Facilitates research on cross-region model robustness and transferability

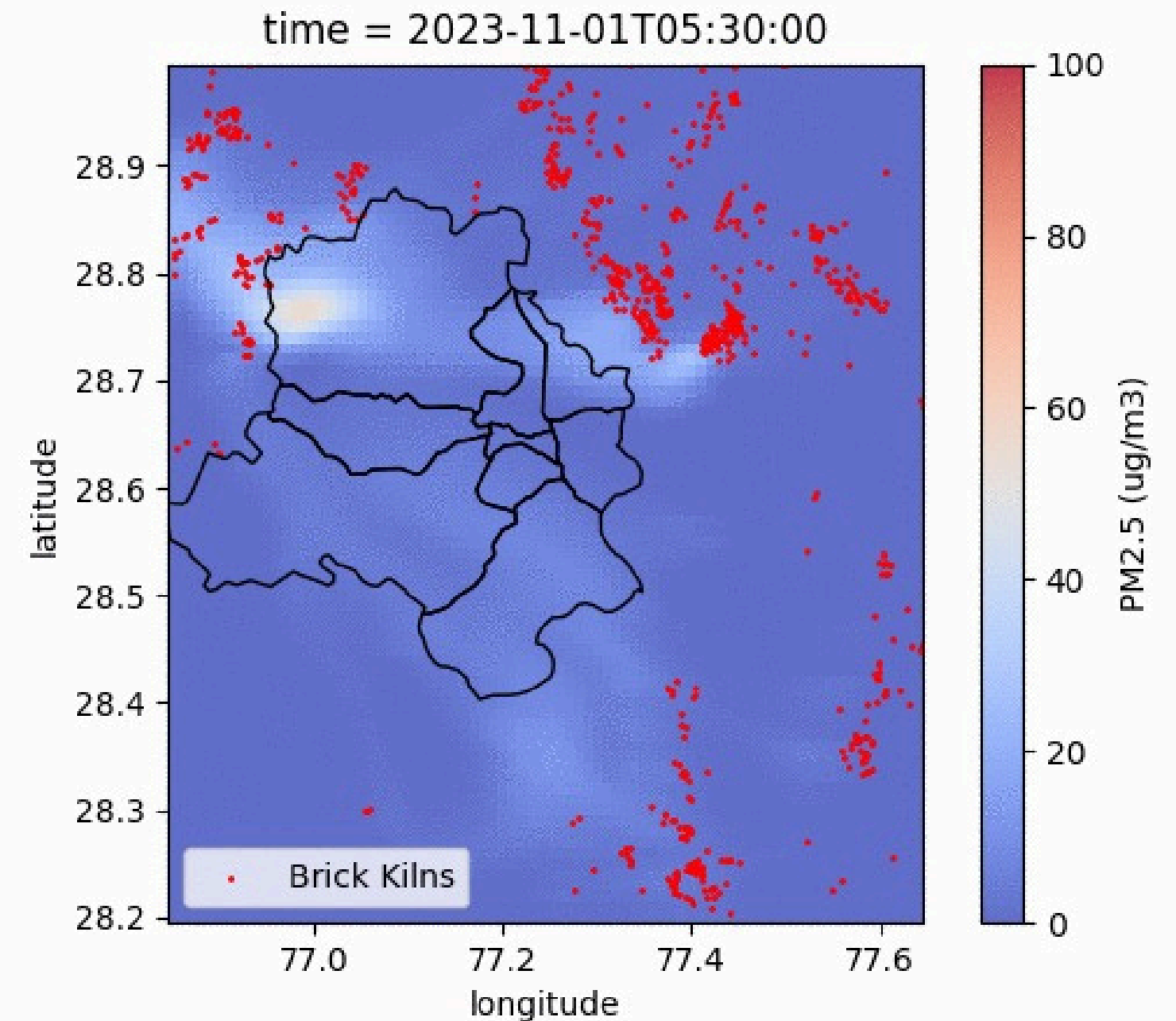


OBB Detection in Low-Resolution Imagery



# Applications

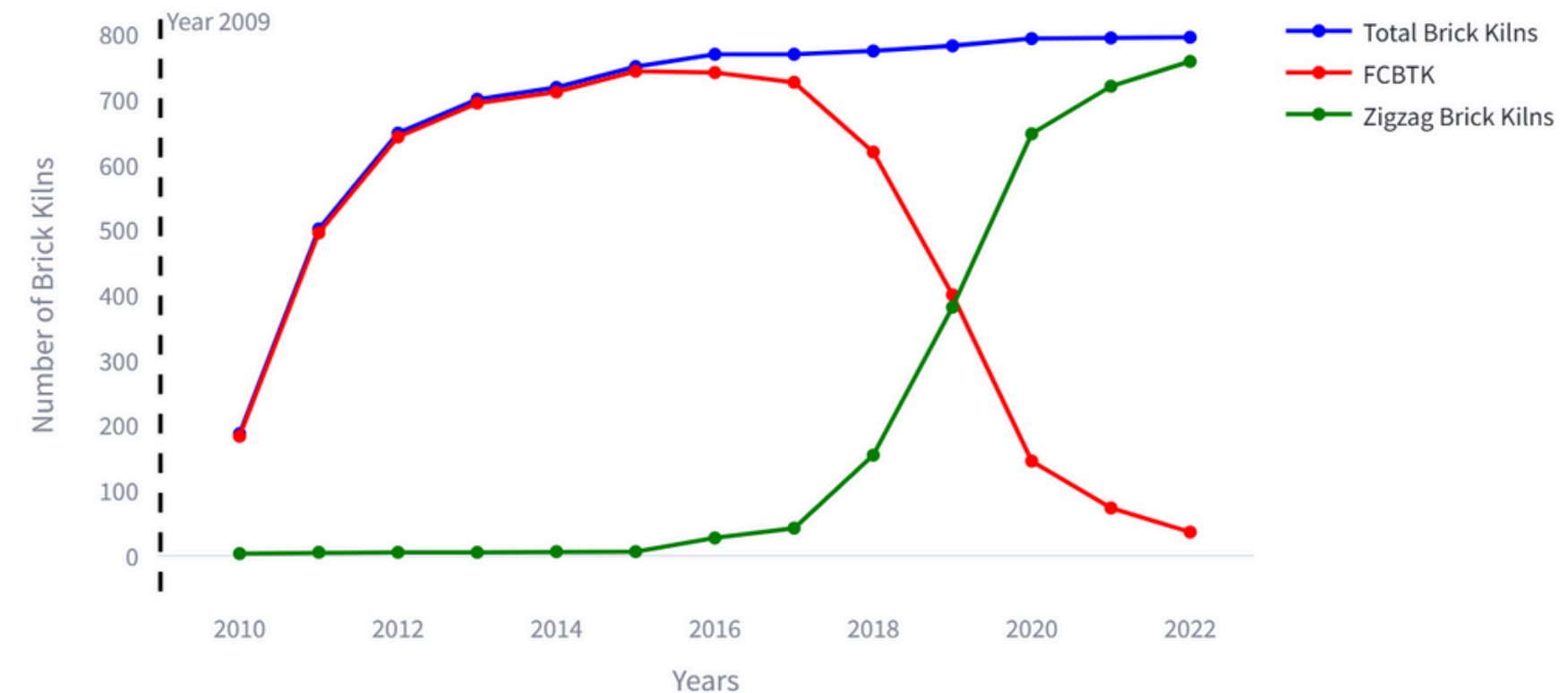
- Provides a benchmark for OBB detection in low-resolution satellite imagery and geospatial generalization
- Enables accurate kiln-level emission estimates for air quality modeling
- Assists policymakers in monitoring technology transitions and compliance
- Facilitates research on cross-region model robustness and transferability



Air Pollution simulations for  
What-if scenarios

# Applications

- Provides a benchmark for OBB detection in low-resolution satellite imagery and geospatial generalization
- Enables accurate kiln-level emission estimates for air quality modeling
- Assists policymakers in monitoring technology transitions and compliance
- Facilitates research on cross-region model robustness and transferability



Number of Brick Kilns over years in Delhi



# Conclusion

**62671**

Kilns

**2.8M**

Km<sup>2</sup> Coverage

**4**

Countries

**3**

Kiln Types

**114300**

Sentinel-2 Images

**28**

Models